



Warewashing Undercounter Dishwasher single skin with atmospheric boiler, drain pump & detergent dispenser, 40r/h

ITEM # _____
MODEL # _____
NAME # _____
SIS # _____
AIA # _____



400085 (VUCA3G)

Undercounter dishwasher,
single skin with atmospheric
boiler, drain pump, detergent
and rinse aid dispenser, 40
racks/h or 720 plates/h

Short Form Specification

Item No.

Unit shall be undercounter type hot water rinsing dishmachine with atmospheric boiler. Electrical characteristics to be ___400 volts three phase operation with two automatic cycles of 90/180 seconds for normal and heavily soiled items. Rinse temperature and pressure guaranteed by built in atmospheric boiler and built in rinse booster pump. Washing performance is guaranteed by a powerful wash pump, upper and lower revolving washing spray arms. 304 Stainless steel construction to include door, frame and wash tank. The unit shall include drain pump, detergent and rinse aid dispenser pumps.

Main Features

- Washing capacity of 40 baskets or 720 dishes per hour.
- Washing system endowed with rotating washing arms, high powered wash pump and large capacity boiler for professional washing.
- Built-in atmospheric boiler with rinse booster pump to provide constant water temperature and pressure for rinsing, independent from water inlet.
- Equipped with drain pump for easy and quick installation without opening the machine.
- 90/180 seconds cycle.
- Built-in detergent and rinse aid dispenser with automatic initial and continuous cycle loading for perfect results while minimizing service and maintenance needs.
- 4 second (variable) pause after washing and before rinsing ensures that no drops of unclean water will fall on the clean items at the end of the rinsing cycle.
- An effective rinse system uses only 3 litres of clean hot water per basket for lower running costs.
- Incorporated Soft Start feature to offer additional protection to more delicate items.
- Three phase or single phase electrical connection, convertible on-site.
- Fully automatic self-cleaning cycle avoids the risk of bacteria proliferation.
- Simple control panel with digital display allows on-site personalization of washing and rinsing cycle times and temperatures as well as precise rinse aid and detergent quantities to suit customer's needs.
- Fault auto-diagnosis system.
- Pre-arrangement for HACCP system implementation and Energy Management device.
- IPX 4 water protection.

Construction

- The boiler drain facilitates the evacuation of stagnant water after long periods of inactivity to ensure a higher level of hygiene.
- Unit to feature smooth surfaces to facilitate cleaning.
- Front and side panels, door and wash tank made in heavy duty anti-corrosive AISI 304 stainless steel.
- 304 stainless steel boiler with higher welding protection to increase resistance to corrosion.
- Completely closed on the back by a cover plate.
- Large wash tank with round corners and no pipes to avoid dirt built-up.
- Unit to feature rinse aid and detergent dispenser pumps.

Included Accessories

- 1 of Stainless steel tank filter for single skin undercounter PNC 864222
- 1 of Cutlery container - yellow PNC 864242

APPROVAL: _____

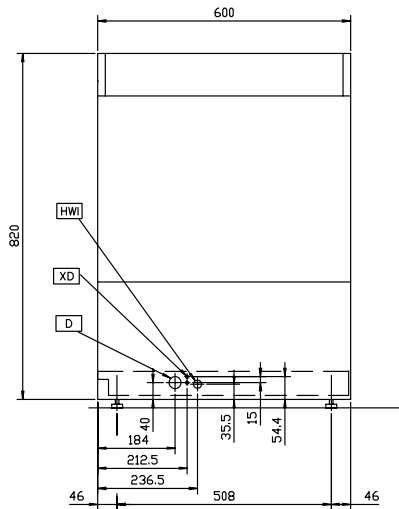
Warewashing
Undercounter Dishwasher single skin with atmospheric boiler,
drain pump & detergent dispenser, 40r/h

- 1 of Basket for 18 dinner plates 240mm - yellow PNC 867002

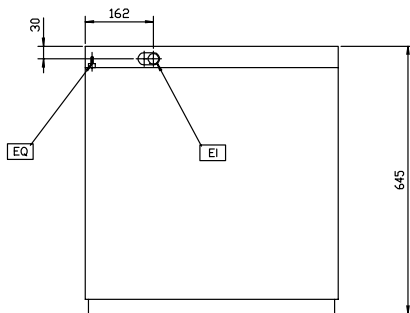
Optional Accessories

- 12lt external manual water softener PNC 860412 ☐
- 8lt external automatic water softener PNC 860413 ☐
- Stand for undercounter dishwasher PNC 860418 ☐
- Integrated HACCP kit PNC 864001 ☐
- HACCP printer kit PNC 864002 ☐
- External detergent level probe kit PNC 864004 ☐
- External rinse aid level probe kit PNC 864005 ☐
- Stainless steel inlet hose kit PNC 864016 ☐
- Filter for partial demineralization PNC 864017 ☐
- Kit to measure total and partial water hardness PNC 864050 ☐
- Cutlery container - yellow PNC 864242 ☐
- AISI 304 stainless steel back panel for undercounters EUC PNC 864246 ☐
- Filter for total demineralization PNC 864367 ☐
- Reverse osmosis filter for single tank dishwasher with atmosphere boiler PNC 864388 ☐
- Pressure reducer for single tank dishwasher PNC 864461 ☐
- Half size basket universal PNC 864527 ☐
- Half size basket for plates PNC 864528 ☐
- Half size basket for glasses PNC 864529 ☐
- Kit 4 plastic boxes for cutlery - yellow PNC 865574 ☐
- Basket for 18 dinner plates 240mm - yellow PNC 867002 ☐
- Basket for 48 small cups/24 cups - blue PNC 867007 ☐
- Cover rack for small and light items (500x500 baskets) PNC 867016 ☐

Front

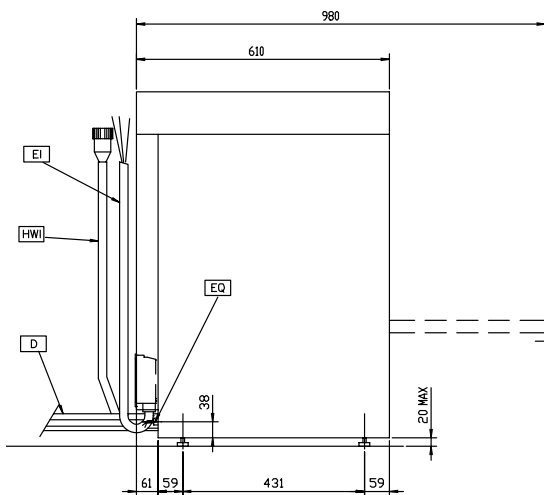


Top



- D** = Drain
EI = Electrical inlet (power)
EO = Electrical Outlet
HWI = Hot water inlet
V = Air vents
XD = Detergent connection
XR = Rinse aid connection

Side



Electric

Supply voltage:

400085 (VUCA3G) 400 V/3N ph/50 Hz

Convertible to:

230V 1N~; 230V 3~

Total Watts:

5.35 kW

Boiler heating elements:

4.5 kW

Tank heating elements:

2 kW

Water:

Water supply temperature*:

10-60 °C

Drain line size:

40 mm

Inlet Water supply pressure:

7 - 102 psi (0.5 - 7 bar)

Boiler Capacity (lt):

5.8

Tank Capacity (lt):

33

Washing cycle temperature:

71 °C

Hot rinse cycle temperature:

84 °C

Hot rinse cycle water consumption (lt):

3

Key Information:

Baskets per hour*:

40

N° of working cycles - sec.:

2 (90/180)

Cell dimensions - width:

500 mm

Cell dimensions - depth:

500 mm

Cell dimensions - height:

330 mm

Dishes per hour:

720

External dimensions, Height:

820 mm

External dimensions, Width:

600 mm

External dimensions, Depth:

610 mm

Noise level:

<70 dBA