



Warewashing Dual rinse rack type dishwasher, 200 racks_hour, electric, 50Hz

ITEM # _____

MODEL # _____

NAME # _____

SIS # _____

AIA # _____

536047 (VDR200EC5)

Dual rinse rack type
dishwasher, 200 racks/hour,
Filtering System, electric,
touch screen, customized
direction on-site, 50Hz,
thermal label compliant - Asia

Short Form Specification

Item No.

Unit to be dual rinse rack type dishwasher. Dual rinse with built-in stabilized pressure valve ensures the right rinsing pressure for optimum hygiene results. Maximum Water Contact (MWC) wash arms are positioned along the full length of the wash tank. Included medium pre-wash zone works with cold water of maximum 40°C. Powerful wash pump and specially designed wash spray arms guarantee cleaning. Washing is done with water circulating at 55-65°C. Final rinsing is done with clean water heated up to 85°C. Dual rinse technology provides rinse water covering maximum the rinse area to ensure hygiene on washed wares. Low rinse water consumption of 0.9liters per rack at maximum speed of 200racks/hour. Three conveyor speeds are selectable by the operator with maximum capacity of 200racks/hour. Intuitive touch screen control panel provides easy communication on different levels. Large counter-balance door has heat and noise insulation with easy internal access. Filtering system removes majority of soil from the wash water to ensure clean water for long time. Built-in drain valve in the tank allows automatic dump and fill to refresh the water in the tank without interruption. Standard end of the day self cleaning cycle and sanitation cycle. Operating direction of the machine is decided by customer on-site depending on the layout flow with pre-arranged right to left from the factory.

Main Features

- The unit is designed in compliance with Marriott's Food Safety Operational Standards, NSF/ANSI-3 standard, thermal label test, DIN 10510.
- Automatic drain, clean and sanitize cycles featured as standard. The internal chamber, is completely cleaned or sanitized avoiding bacteria proliferation for maximum hygiene and reducing manual work/time for operator.
- Dual rinse technology ensures maximum rinse water covering every corner of the rack inside the rinse area for perfect hygiene on washed wares.
- Three conveyor speeds can be selected through the control panel by the operator and customized on-site.
- Large counter balanced inspection door allow unrestricted all-round access to the wash and rinse area. Door is insulated with injected foam. This adds strength as well as reduces noise and heat loss.
- Unit equipped with USB port making it simple to read data such as machine identification, counters and consumption, components, devices and alarm logs. Machine parameters can be uploaded and downloaded and firmware updated.
- Adjustable feet for full access underneath the machine for cleaning.
- All internal components: wash and rinse arms, tank filters, curtains can be easily removed for cleaning.
- Intuitive touch screen control panel features user-friendly display to easily operate the machine and to monitor machine status. Three different levels of interaction are available each show relevant messages and information to the operator, the general maintenance staff and the authorized service partners.
- Built-in drain valve in the tanks allows automatic dump and fill to refresh the water in the tank without any interruption of the washing process.
- IP25 protection against water jets, solid objects and small animals (larger than 6 mm).
- Filtering system removes soil from the wash water providing cleaner water and highly active detergent thus ensuring better washing performance and lower running costs.
- Maximum capacity per hour of 200 racks easy to switch to Marriott's Food Safety Operational Standards/ NSF Standard/ Thermal label compliant or DIN 10510 compliant speed.

Construction

- Deep drawn pressed wash tank with fully rounded corners, sloped towards the drain to prevent dirt buildup, provides fast drainage in just a few minutes. With no welding points the pressed tank offers a guaranteed water tight solution.
- Modularity design allows the machine not only be disassembled for delivery and re-assembled at customer's site, but also to be customized and upgraded on-site and over time.
- Dishwasher structure is held together with a solid 50 x 50 mm stainless steel frame to provide long-term sturdiness.
- All electric components are put in one IP65 central box isolated from water and steam to ensure high reliability.
- External pre-arrangement for inlet water, drain water, detergent & rinse aid connections for fast and easy installation on both sides of the unit.
- All main components made in heavy duty anti-corrosive 304 type stainless steel: external front, side panels and internal

APPROVAL: _____

Part of



Electrolux
Professional
Group

Veetsan Star

chambers, wash and rinse arms, doors and rack transportation system.

- The feeding direction is right to left as pre-arrangement from the factory, but it can be simply reversed on-site to left to right.
- The unit is built on modularity concept for easy to add pre-wash and dryer modules on-site.

Sustainability

- Self-draining vertical wash pumps provide maximum hygiene.
- Automatic back-up mode is activated when a failure occurs. Guided troubleshooting for fast fixes including 150 precise notifications and 23 easy-to-follow processes.
- All chambers without internal pipes and therefore no hidden dirt traps.
- Built-in stabilized pressure valve ensures constant pressure throughout the rinsing cycle regardless of inlet water pressure.
- Auto-start/stop equipped in different zones ensures that the zone runs only when a rack is passing through it. This reduces water, energy, chemical consumption and noise.
- Dual rinse with stabilized pressure valve guarantees rinse water consumption of 0.9 liters/ rack regardless of inlet water pressure to ensure low energy, water, detergent and rinse aid consumption.

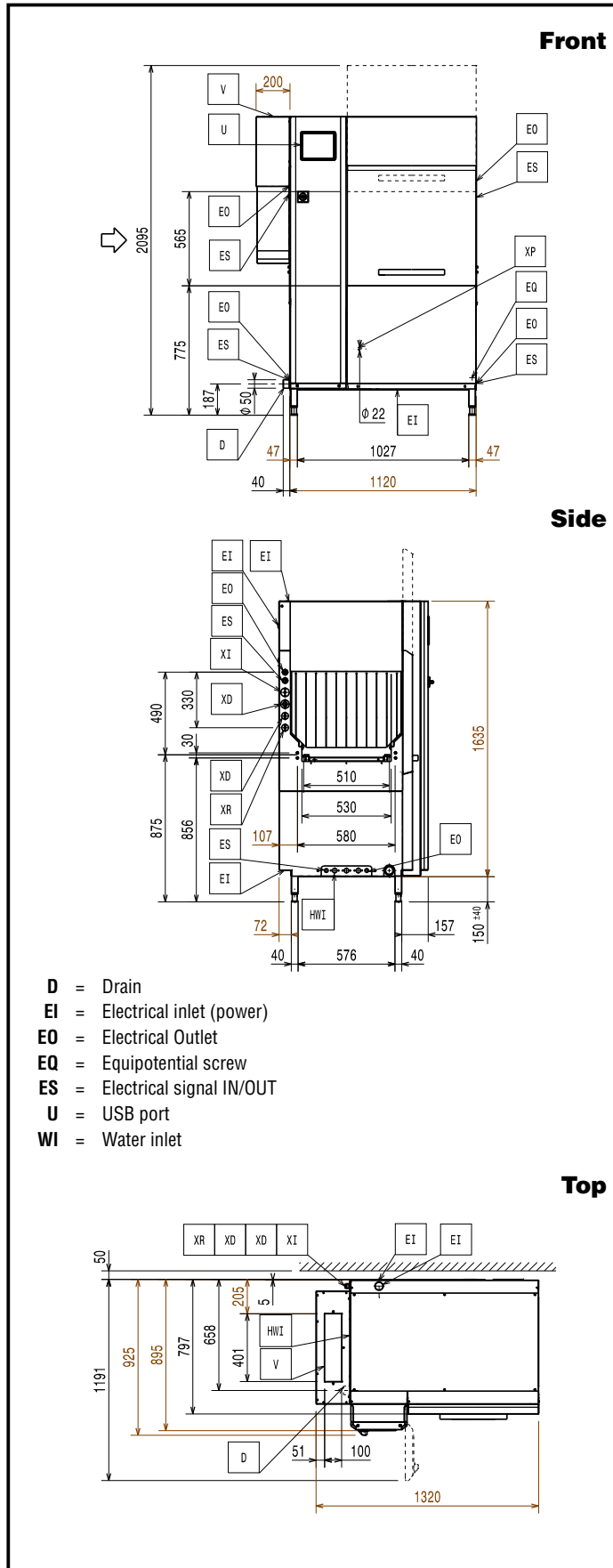
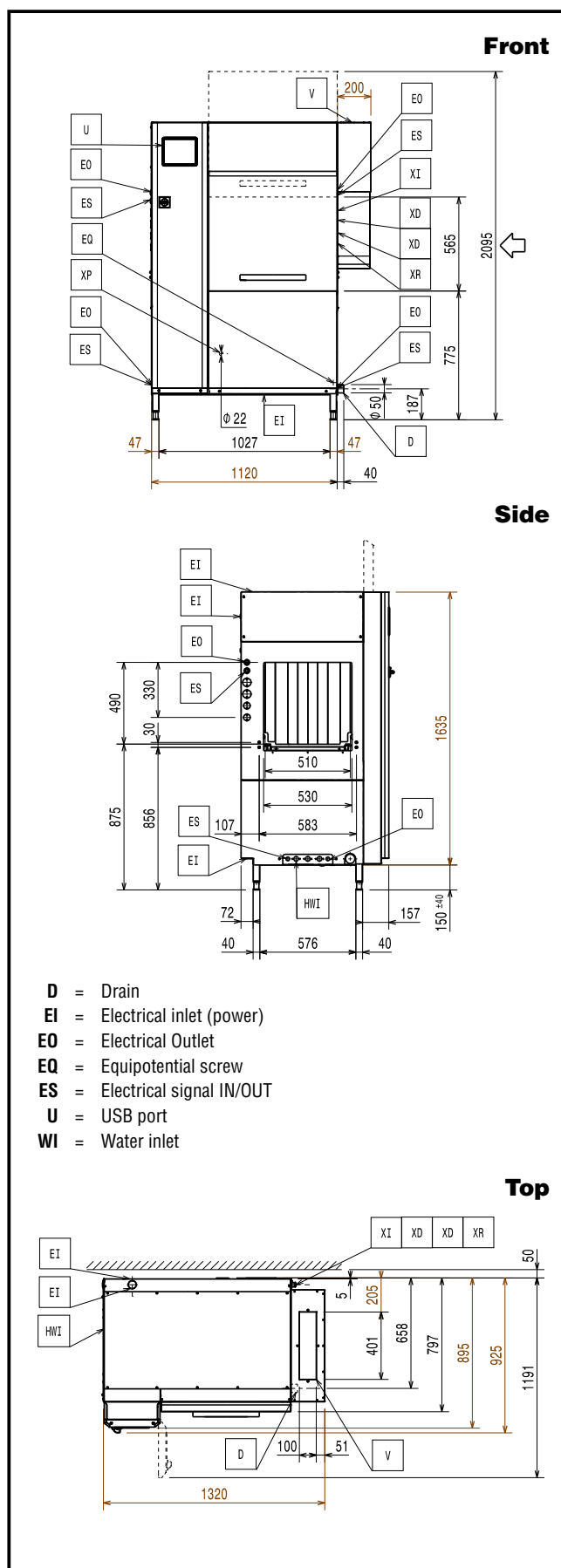
Included Accessories

- 1 of KIT SPLASH HOOD OF 200MM FOR SINGLE AND DUAL RINSE RT PNC 865498

Optional Accessories

- Medium pre-wash zone for Rinse Rack Type Dishwasher PNC 535095 ☐
- Large drying zone with door for Dual Rinse Rack Type Dishwasher PNC 535098 ☐
- Corner drying zone for Dual Rinse Rack Type Dishwasher PNC 535099 ☐
- Kit electronic board for Dual Rinse Rack Type Dishwasher PNC 865506 ☐
- Kit delime & door cleaning for dual for Rinse Rack Rack Type Dishwasher PNC 865507 ☐
- Kit electronic connection for motorized table and remote pre wash module for Dual Rinse Rack Type Dishwasher PNC 865508 ☐

Warewashing Dual rinse rack type dishwasher, 200 racks_hour, electric, 50Hz





Warewashing Dual rinse rack type dishwasher, 200 racks_hour, electric, 50Hz

Electric

When the machine is run at DIN 10512 compliant speed.

Wash pump size:	1.5kW
Supply voltage:	380-415 V/3N ph/50 Hz
Default Installed Power:	42 kW
Boiler heating elements:	20 kW
Electrical power, min:	22 kW
Wash tank heating elements:	20 kW

Water:

When below 7°F/4°dH special detergent and rinse aid are needed.

Peak rate of drain flow:	2.5 l/s
Wash tank size:	70 l
Inlet hot water line size:	
Drain line size:	50mm
Inlet water supply pressure:	1.5-6 bar
Inlet water supply temperature (wash and rinse):	10 - 65°C
Inlet water supply hardness:	14 °fH / 8°dH
Rinse water consumption:	180 l/h

Key Information:

For transportation purpose only, the depth can be reduced to either 895mm by removing the main switch button or 797mm by removing the control box and the door handle.

Reference norm used to measure the noise: IEC60335-2-58 annex AA.

Table to table distance:

Height with door open:	2095 mm
Charging hole size (width):	530 mm
Productivity per hour (max. speed):	200 racks/3600dishes
Productivity per hour (Marriott/ NSF/ Thermal label compliant speed):	95racks/1710dishes
External dimensions, Width:	1320 mm
External dimensions, Depth:	925 mm
External dimensions, Height:	1785 mm
Productivity per hour (DIN compliant speed):	82 racks/1476 dishes
Charging hole size (height):	490 mm
Wash Temperature:	55 - 65 °C
Shipping height:	1951 mm
Shipping width:	1006 mm
Shipping depth:	1255 mm
Shipping volume:	2.46 m³
Final rinse temperature:	92 °C

Air Emission:

Air temperature:	
536047 (VDR200EC5)	45 °C
Air humidity (entrance, exit):	
536047 (VDR200EC5)	100 / 100 % r.h.
Latent heat:	9100 W
Sensible heat:	3400 W
Air flow (top, exit):	107 / 107 m³/h
Air flow (entrance, exit):	107 / 107 m³/h

The data is measured at exhaust points at 25°C and 60% r.h. ambient conditions, 18°C inlet water temperature and refer only to the machine.

This model requires a ventilation hood. Please refer to the attached "Recommended Exhaust Hood Design".

Sustainability

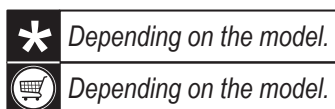
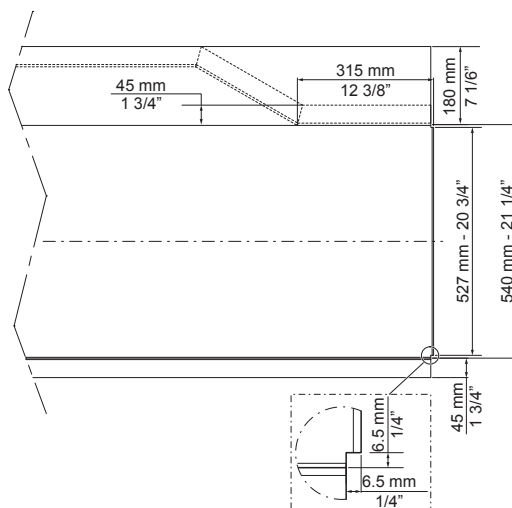
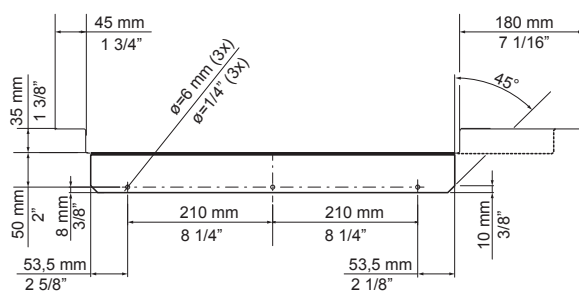
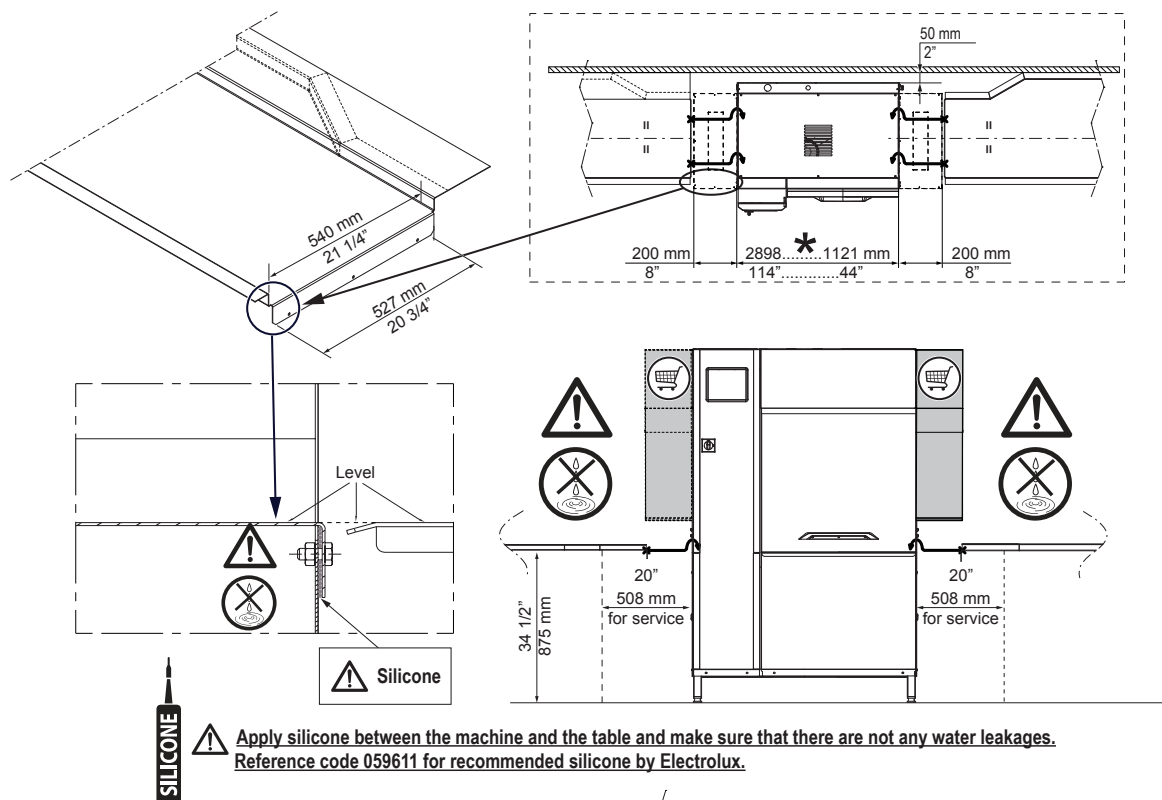
Noise level:	<62 dBA
Rinse water consumption at max speed:	0.9 l/rack



Warewashing
Dual rinse rack type dishwasher, 200 racks_hour, electric, 50Hz
The company reserves the right to make modifications to the products without prior notice. All information correct at time of printing.

2025.05.21

RECOMMENDED TABLE CONNECTION



All tables must be connected to the dishwashing units according to local regulations and industry standards which may differ from the recommendations herein suggested. Electrolux Professional is not liable for any failure in complying with local design standards.

DOC. NO. 59566QD00
EDITION 01.2020